

AXIUM Lane/8000

User Guide



Terminal ready for
visual impaired people

www.ingenico.com

13-17 rue Pagès, 92150 Suresnes – France

Banks and Acquirers International Holding SAS / 814 767 216 RCS Nanterre

Contents

1. Introduction	4
2. Unpacking	5
3. Recommendations	6
3.1 Safety	6
3.2 Security of your terminal (tampering attempt detection)	7
3.3 Main Characteristics	9
3.3.1 Terminal	9
3.3.2 Power characteristics	10
3.3.3 Terminal Connectivity	11
3.3.4 WLAN (2.4 GHz / 5 GHz)	11
3.3.5 Bluetooth)	12
3.4 USB Type-C	13
4. Installation & connections	14
4.1 Positioning the terminal	14
4.2 Inserting SAM (Secure access module) and Micro SD	14
4.3 Connecting the terminal to the host	16
4.4 Setting the Lane/8000 on the standpole adaptor	19
5. Daily user	21

5.1 Card reading	21
5.1.1 Swiping a card	21
5.1.2 Inserting a smart card	21
5.1.3 Reading a contactless	22
5.2 Signature capture	23
5.3 Audio	23
5.4 Camera	24
6. Maintenance	25
6.1 Cleaning of the terminal	25
6.2 Transport and storage	26
6.3 Troubleshooting	26
7. Norms & Marking	28
7.1 Information to users in the United States and Canada	28
7.2 No unauthorized modifications	30
7.3 Antenna requirement	30
7.4 Environment (WEE, Batteries and Packaging)	30
7.5 Markings	31
8. Accessibility	34
9. RED-DA (Radio Equipment Directive Delegated Act)	35

1.Introduction

Thank you for choosing an Ingenico payment terminal.

We recommend you to read carefully this user guide: it gives you the necessary information about safety precautions, unpacking, installation and maintenance of your terminal.



WARRANTY / SECURITY

To benefit from the guarantee-related product, and to respect the security, we ask you to use only the power supply delivered in box with the product, entrusting maintenance operations only to an authorized person.

Failure to comply with these instructions will void the manufacturer's responsibility.



This symbol indicates an important Warning.



This symbol indicates a piece of advice.

2.Unpacking

According to the model, the following items are included in the packaging box (including optional accessories) :

- **The terminal**



The box may also include the following items depending on your working configuration :

- **An installation guide**
- **Cable (specific to connectivity requirements)**
- **Power supply unit and power cord**
- **A stylus**
- **Modules**
- **Screws to fix the main cable and the module**



CAUTION

The power supply unit provided with your equipment is specially designed for it. Do not use any other power supply.



ADVICE

Keep the packaging. It must be re-used whenever the terminal is shipped.

3.Recommendations

3.1 Safety

Power on/Power down - Emergency stop

To power on or power down the terminal, connect or disconnect the power supply from the electric outlet.

Power supply unit



CAUTION

Only use the power supply AC/DC provided with Lane/7000 or the power provided by a cash register limited power source (LPS).



CAUTION

Lithium battery cell

The terminal is fitted with a lithium battery cell which is not accessible to the user. Only a qualified technician is authorized to open the unit and change this component.

Risk of explosion if the battery is replaced by an incorrect type. Dispose of used battery according to the instructions.

Electrical power supply network

The electrical outlet must meet the following criteria:

- Must be installed near the equipment and easily accessible;
- Must meet standards and regulations in the country of use.

Explosion areas

Certain regulations restrict the use of radio equipment in chemical plants, fuel depots and any site where blasting is carried out. You are urged to comply with these regulations. The terminal shall be protected by a specially fitted and certified cover enabling use in proximity to a fuel pump.

Connection of headset on audio jack

**CAUTION**

An excessive acoustic pressure of headset can involve deafness!

**WARNING**

We recommend to the customer to provide guidance to the cardholder as to avoid having his card close to any magnets on the device since the card may be damaged. There is one magnet in the stylus and another in its holder.

3.2 Security of your terminal (tampering attempt detection)

Your device fulfils current applicable PCI PTS security requirements.

Upon receipt of your terminal you should check for signs of tampering of the equipment. It is strongly advised that these checks are performed regularly after receipt. You should check, for example: that the keypad is firmly in place; that there is no evidence of unusual wires that have been connected to any ports on your terminal or associated equipment, the chip card reader or any other part of your terminal. Such checks would provide warning of any unauthorised modifications to your terminal, and other suspicious behaviour of individuals that have access to your terminal.

Your terminal detects any "tampered state". In this state the terminal will repeatedly flash the message "Alert Irruption!" and further use of the terminal will not be possible. If you observe the "Alert Irruption!" message, you should contact the terminal helpdesk immediately.

You are strongly advised to ensure that privileged access to your terminal is only granted to staff that have been independently verified as being trustworthy.

The terminal must never be put in or left at a location where it could be stolen or replaced by another device.
as being trustworthy.

The terminal must never be put in or left at a location where it could be stolen or replaced by another device.



WARNING

If the warranty label is torn or removed, the warranty will be void.



CAUTION

Positioning of the Lane/8000 on check stand must be in such a way to make cardholder PIN (Personal Identification Number) spying infeasible.

Installing device on an adjustable stand must be in such a way that consumers can swivel the terminal sideways and/or tilt it forwards/backwards to a position that makes visual observation of the PIN-entry process difficult.

Positioning of in-store security cameras such that the PIN-entry keypad is not visible. NEVER ask the customer to divulge their PIN Code. Customers should be advised to ensure that they are not being overlooked when entering their PIN Code.



CAUTION

This equipment may not be modified, altered or changed in any way without signed written permission from Ingenico

3.3 Main Characteristics

3.3.1 Terminal

Weight (Poids, Gewicht)	796g
Size (dimensions, Maße)	200 (L) x 205,5 (W) x 44 (H) mm
Display	7" backlit LCD, WVGA (800 x 480 pixels)
Touchscreen	Capacitive

Operating conditions

Ambient temperature	from 0°C to +45°C
Max relative humidity	85% RH non-condensing at +40°C
Max altitude	2000 m

Storage conditions

Storage temperature	-20°C, +55°C
Max relative humidity	85% AT +55°C

3.3.2 Power characteristics

Power supply units

The Lane/8000 can be powered by several ways :

- An external power supply unit
- By POE (Power over Ethernet)
- By USB (12VDC)

POE (Power over Ethernet)

The power sourcing equipment must be compliant with IEEE802.3af standard, class 0 which means 12.95W max. POE implementation in the Lane/8000 can support both mode A and mode B.



WARNING

The power supply unit provided with your equipment is specially designed for this Ingenico terminal. Do not use any other power supply. The use of a power supply with apparently similar voltage/current characteristics may damage your terminal.



AVERTISSEMENT

Dans le cas où vous choisiriez d'utiliser un bloc alimentation, assurez-vous de n'utiliser que le bloc d'alimentation qui a été conçu spécialement pour votre terminal. N'utilisez pas d'autre bloc d'alimentation. L'emploi d'un bloc d'alimentation présentant des caractéristiques apparemment similaires de tension/intensité peut endommager votre terminal.

Power values in different modes

Lane/8000 works at voltages between 8VDC and 12VDC.

Mode	Lane/8000 Power (W)
Idle mode - backlight OFF	3.1
Idle mode - backlight ON	3.5
Typical - smartcard and contactless in test-Backlight ON	8.8
Maximum (+2 Loads of 2.5W each)	16

3.3.3 Terminal Connectivity

USB	High speed USB Device in the single connector
Ethernet	10/100 Base T Ethernet is available on the Lane/8000. It is recommended to use TCP Protocol
RS232	It is a 2 wire interface on the Lane/8000 (Rx/Tx). It can run up to 115200bps

3.3.4 WLAN (2.4 GHz / 5 GHz)

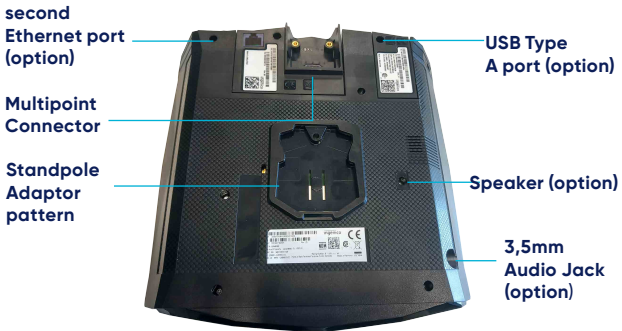
Standard	802.11 a/b/g/n
Frequency band 2.4 GHz	DTS band 2400 MHz to 2483.5 MHz
Type of modulation	BPSK, QPSK, 16 – QAM, 64 – QAM
Number of channels	13 (20 MHz BW) / 9 (40 MHz BW)
Frequency band 5GHz	5150 MHz to 5250 MHz; 5250 MHz to 5350 MHz; 5470 MHz to 5725 MHz; 5725 MHz to 5850 MHz

Type of modulation	(D)BPSK, (D)QPSK, 16 – QAM, 64 – QAM; 256 – QAM
Number of channels	19 (20 MHz BW) / 9 (40 MHz BW)
Max output power	< 20dBm

3.3.5 BLUETOOTH

Standard	Bluetooth® + EDR
Frequency band	ISM band 2400 MHz to 2483.5 MHz
Type of modulation	GFSK, Pi/4 QPSK, 8 DPSK
Number of channels	79 (1 MHz BW)
Max output power	<4 dBm

3.4 Functional description



4. Installation & Connections

4.1 Positioning the terminals

Place the terminal with an easy access to an electrical outlet. Place the terminal away from any heat source and protected from dust, vibrations and electromagnetic radiations (away from video terminals, PC, anti-shoptlifting barriers ...). The terminal is exclusively made for indoor use. The Lane/8000 device may be mounted on a flat surface, wall, or customer stand.



CAUTION

Do not place the Lane/8000 device on a PC monitor, adjacent to an electronically active security tag deactivation system, or near other sources of magnetic fields.

The Lane/8000 device must be at least 30 centimeters (12 inches) away from an electronically active type of security tag deactivation pad.

- An electronically active system sends out a powerful and potentially disruptive signal to deactivate the security tag. If the Lane/8000 device is placed too close to the system's pad, or placed above the pad, the product may not work properly.
- A passive system is a permanent magnet type that does not send out a signal. This type should not affect the Lane/8000 device.

4.2 Inserting SAM (Secure access module) and Micro SD



CAUTION

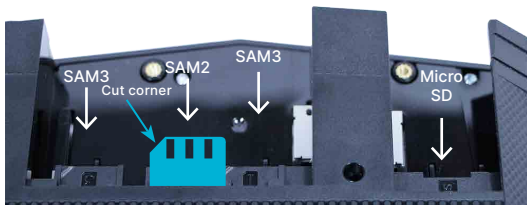
Before starting, switch off the terminal by disconnecting the power supply.

Perform the following operations :

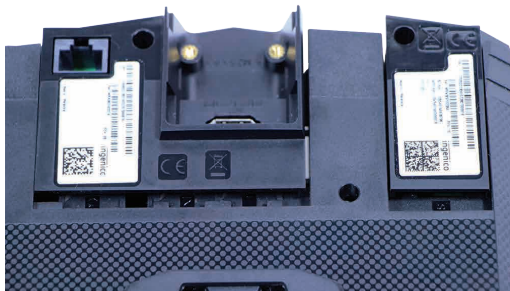
- Unscrew the modules and remove them both
- Access to SAM and Micro SD is now possible.



- Insert the SAM Card into the slot marked (1), (2) or (3). Take care to ensure that the SAM Card is inserted in the correct manner. The cut corner must be positioned as indicated on the figure below.



- Slide back the module and screw them tight.

**CAUTION**

Do not use any tools when installing or removing the SAM Card or Micro SD.

**WARNING**

During this operation, it is necessary to be in an ESD protected environment. As this is not very easy, it is recommended to make this operation using ESD shoes for example.

4.3 Connecting the terminal to the host

**CAUTION**

Connecting must be made when power supply unit is not plugged in the cable.



- Flip the terminal. There is one port on the back for power and communications.
- Connect the cable on the terminal.
- Connect the other end to the power supply unit and a Host (PC / cash register...).
- Plug the power supply into the mains.



WARNING

The main port at the back must not be used to connect an HDMI video cable. Only connect cables provided by Ingenico.

Note : 2 screws can be added (M2.5 x 8) to hold more firmly the cable. The terminal can be connected to the host by several ways, with optional cables :

- High speed USB device
- Ethernet
- RS232

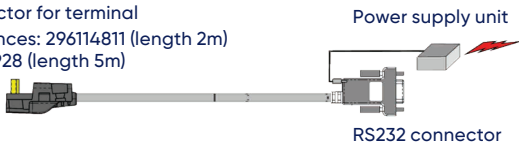
Most of the cables used with iSC and iPP ranges are compatible with the Lane/8000. We advise to check with your reseller their compatibility if you plan to replace an iSC480 / iSC250 / iSC Touch 250 by a Lane/8000.

Following are some examples of accessories that can be used to connect the Lane/8000 (ACC-LANE8000). This list is not exhaustive. Please contact your reseller for more information.

● **RS232 cable (optional)**

Connector for terminal

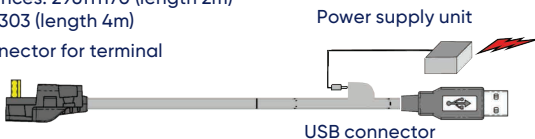
References: 296114811 (length 2m)
296114928 (length 5m)



● **USB cable (optional)**

References: 296111170 (length 2m)
296114303 (length 4m)

Connector for terminal



● **USB powered 12V cable (optional)**

Connector for terminal

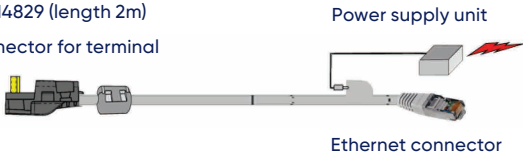
References: 296178419 (length 2m)



● **Ethernet cable (optional)**

Reference : 296114829 (length 2m)
296114829 (length 2m)

Connector for terminal



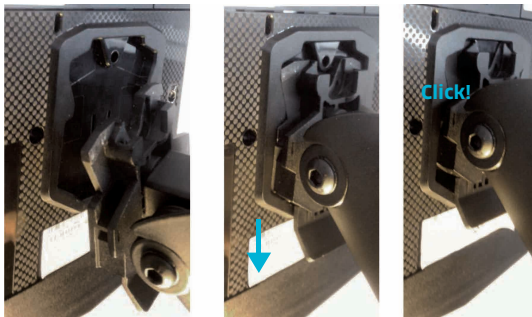
4.4 Setting the Lane/8000 on the standpole adaptor

Install the terminal on a flat surface is not possible on the Lane/8000 as is. It is designed to be fitted on a standpole adaptor.

A specific pattern by Ingenico has been developed to fit the Lane/8000.



To fit the Lane/8000 to the stand pole adaptor, it only requires to slide down the Lane/8000 until a click sound:



The Lane/8000 is now ready to use :



5. Daily use

5.1 Card reading

5.1.1 Swiping a card

- Insert the card manually in the reader, magnetic stripe facing the main body of the terminal, and slide the card from the rear to the front in a continuous motion for best results.



Swipe the card with constant speed, neither too slowly nor too fast, to maximize the reading efficiency and avoid annoying repetitions.



WARNING

We recommend to the customer to provide guidance to the carholder as to avoid having his card close to any magnets on the device since the card may be damaged. There is one magnet in the stylus and another in its holder.

5.1.2 Inserting a smart card

- Chip cards should be inserted into your terminal as illustrated with the chip facing up and into the card reader.



5.1.3 Reading a contactless card

- Bring the card to the active zone above the contactless logo (at about 1cm).
- Keep the card close to the contactless logo during the transaction.



Your contactless terminal provides four contactless status lights located above the contactless logo.

- When a contactless transaction is started the first (left hand) status light will be lit steadily; this indicates that the contactless is in use but a card is not being read.
- When a contactless card is presented to the contactless active zone during a transaction the second, third and fourth status lights will be lit in turn. The card read is successful when all four status lights are lit and a confirmation tone can be heard.



CAUTION

Do not stick any label onto the contactless active zone. It can decrease seriously contactless efficiency.



CAUTION

Avoid metallic parts around the contactless area.


5.2 Signature capture

- The signature capture is done with a stylus and a capacitive touchscreen.



5.3 Audio

A speaker is available there is also an Audio jack. When a headset is plugged in, there is no more sound from the speaker.

- The audio jack  is located next to the card reader.
- This option is not designed to play music, but to facilitate the use by blind people.
- The jack is 3.5mm, 32 ohms impedance.

5.4 Camera (optional)



The Lane/8000 can be equipped with a module integrating a 5 megapixels autofocus camera.

Reference of the module : MODU/8005 WiFi/BT

Note : The Lane/8000 can be equipped with a module without camera.
Reference of the module : MODU/7003 WiFi/BT

6. Maintenance



CAUTION

Before making any operations of maintenance in the terminal, make sure that the power supply is disconnected.

6.1 Cleaning of the terminal

Guidelines for the proper cleaning of Ingenico Payment Terminals are as follows:

- Ingenico recommends using a soft cloth very slightly impregnated with soapy water to clean the outside of the terminal.
- It is recommended to use cloth pre impregnated for a better control of the quantity of liquid applied on the device. An excessive application of liquid may possibly generate some functional problem
- Hydroalcoholic solution can only be used when on a pre-impregnated cloth.
- Some hydroalcoholic solution may include isopropyl alcohol. It can be used on every part of the device if isopropyl alcohol concentration is below 20%.

Do not:

- Do not clean the electrical connections.
- Do not spray, pour or coat any liquid, disinfectant or cleaners directly on the payment terminal.
- The list might not be limited to the following chemical agents, but do not use solvents, bleach, hydrogen peroxide, thinner, trichloroethylene, or ketone-based solvents, Ether, Thymol based agent, detergents or abrasive products as they may damage the plastic or electrical contacts.

- Alcohol cleaning solutions (isopropyl solution 70%) cannot be used on the plastic display lenses.
- Avoid excessive wiping, which might cause damage
- Do not get moisture into any openings nor use aerosol sprays.
- Avoid exposing the terminal to the direct rays of the sun.
- Avoid exposing the terminals to UV-C lamps as it could degrade the cosmetic or create functional damage on the terminal".
- Do not put anything into the slot of the smart card reader

1) Please note: While cleaning as per the instructions above has no impact on the performances or functions of our terminal, a very frequent cleaning may modify the cosmetic aspect of some plastic parts used into our devices; such cosmetic wear is not covered by the standard INGENICO warranty conditions.

6.2 Transport and storage

- Use the original packaging for storage or returning the unit.
- Disconnect all cables from the terminal during the transport.

6.3 Troubleshooting

Device is not working

- Make sure that the Lane/8000 connector is fully inserted into the back of the device.
- Restart the device.
- If you have another working Lane/8000 device, swap the devices to determine if the problem is with the device, cable, POS, or power supply.
- If the Lane/8000 device is directly connected to a host, reset the host by turning it off and back on again.

Magnetic Card Reader Does Not Work Properly

- When sliding the card through the reader, make sure that the magnetic stripe on the card is facing the Lane/8000 display screen (see Swiping a Magnetic Stripe Card).
- Swipe the card at a faster or middle steady speed.
- Inspect the magnetic stripe on the card to make sure it is not scratched or badly worn.
- Security tag deactivation system could disturb the magnetic card reader
- To determine if the problem is with the card :
 - a. If your host device has a magnetic stripe reader, try swiping the card there.
 - b. If you have another working Lane/8000 device, try swiping the card there.

Smart Card Reader Does Not Work Properly

- Make sure you have inserted correctly the smart card into the smart card reader and removed the card only after the transaction

MicroSD Card Reader Does Not Work Properly

- Make sure you have inserted correctly the microSD card into the card reader.
- Check that the card capacity is not higher than 32GB.

Touchscreen / Signature Capture Does Not Work Properly

- Make sure you use the correct power supply.
- Replace the stylus



WARNING

Changes or modifications to this device not expressly approved by the party responsible for compliance could void the user's authority to operate the equipment.

7. Norms & Markings

7.1 Information to users in the United States and Canada

Federal Communication Commission Interference Statement 47 CFR Section 15.105(b)

This equipment has been tested and found to comply with the limits for a Class B digital device, pursuant to Part 15 of the FCC Rules. These limits are designed to provide reasonable protection against harmful interference in a residential installation. This equipment generates uses and can radiate radio frequency energy and, if not installed and used in accordance with the instructions, may cause harmful interference to radio communications. However, there is no guarantee that interference will not occur in a particular installation. If this equipment does cause harmful interference to radio or television reception, which can be determined by turning the equipment off and on, the user is encouraged to try to correct the interference by one of the following measures :

- Reorient or relocate the receiving antenna.
- Increase the separation between the equipment and receiver.
- Connect the equipment into an outlet on a circuit different from that to which the receiver is connected.

This device complies with Industry Canada licence-exempt RSS standard(s). Operation is subject to the following two conditions : (1) this device may not cause interference, and (2) this device must accept any interference, including interference that may cause undesired operation of the device.

Le présent appareil est conforme aux CNR d'Industrie Canada applicables aux appareils radio exempts de licence. L'exploitation est autorisée aux deux conditions suivantes : (1) l'appareil ne doit pas produire de brouillage, et (2) l'utilisateur de l'appareil doit accepter tout brouillage radioélectrique subi, même si le brouillage est susceptible d'en compromettre le fonctionnement.

Under Industry Canada regulations, this radio transmitter may only operate using an antenna of a type and maximum (or lesser) gain approved for the transmitter by Industry Canada.

To reduce potential radio interference to other users, the antenna type and its gain should be so chosen that the equivalent isotropically radiated power (e.i.r.p.) is not more than that necessary for successful communication.

Conformément à la réglementation d'Industrie Canada, le présent émetteur radio peut fonctionner avec une antenne d'un type et d'un gain maximal (ou inférieur) approuvé pour l'émetteur par Industrie Canada. Dans le but de réduire les risques de brouillage radioélectrique à l'intention des autres utilisateurs, il faut choisir le type d'antenne et son gain de sorte que la puissance isotrope rayonnée équivalente (p.i.r.e.) ne dépasse pas l'intensité nécessaire à l'établissement d'une communication satisfaisante.

Radiofrequency radiation exposure Information :

This equipment complies with FCC and IC radiation exposure limits set forth for an uncontrolled environment. This equipment should be installed and operated with minimum distance of 20 cm between the radiator and your body. This transmitter must not be co-located or operating in conjunction with any other antenna or transmitter.

Information relative aux expositions radiofréquences :

Cet équipement est conforme aux limites d'exposition aux rayonnements IC établies pour un environnement non contrôlé. Cet équipement doit être installé et utilisé avec un minimum de 20 cm de distance entre la source de rayonnement et votre corps. Ce transmetteur ne doit pas être placé au même endroit ou utilisé simultanément avec un autre transmetteur ou antenne.

7.2 No unauthorized modifications

Federal Communication Commission Interference Statement 47 CFR Section 15.21.

Consult the dealer or an experienced radio/TV technician for help.



CAUTION

This equipment may not be modified, altered, or changed in any way without signed written permission from Ingenico. Unauthorized modification may void the equipment authorization from the FCC and will void the Ingenico warranty.

7.3 Antenna requirement

Federal Communication Commission Interference Statement 47 CFR Section 15.203.

This device complies with Part 15 of the FCC Rules. Operation is subject to the following two conditions: (1) This device may not cause harmful interference, and (2) this device must accept any interference received, including interference that may cause undesired operation.

7.4 Environment (WEEE, Batteries and Packaging)

This product is labeled in accordance with European Directives 2002/96/EC concerning Waste Electrical and Electronic Equipment (WEEE) and 2006/66/EC concerning Batteries and Accumulators. Those provisions are requiring producers and manufacturers to become liable for take-back, treatment and recycling upon end of life of equipment and batteries.



The associated symbol means that WEEE and waste batteries must not be thrown away but collected separately and recycled.



Ingenico ensures that efficient collection and recycling schemes are set-up for WEEE and batteries according to the local regulation of your country. Please contact your resellers for more detailed information about the compliance solution in place for disposing of your old product and used batteries.

Packaging waste must also be collected separately to assure a proper disposal and recycling.

Please note that proper recycling of the electrical and electronic equipment and waste batteries will ensure safety of human health and environment.

7.5 Markings

Below, you will find the different symbols used on the product and its power supply.



The CE marking is the manufacturer's declaration that the product meets the requirements of the applicable EC directives. The CE mark is a mandatory conformity marking for certain products sold within the European Economic Area (EEA).



This TÜV symbol shows consumers at a glance that a product has been examined by neutral experts and that there are no safety concerns



The UL mark appears on end products and complete components suitable for factory and field installation. All of the products carrying these marks are covered by our Follow-Up Services program to determine that products continue to be manufactured in compliance with UL's safety requirements.



Indoor use symbol.



The RCM mark will be the only mark to indicate compliance with the Australian Communications and Media Authority's (ACMA) regulatory arrangements for telecommunications, radio, EMC and electromagnetic energy (EME).



The C-Tick is an identification trademark registered to the Australian Communications Media Authority (ACMA). The C-Tick mark signifies that the labelled electronic device is compliant with applicable electromagnetic compatibility (EMC) requirements



This logo indicates that the product operates with an alternative voltage. This symbol is followed by the ratings (voltage and current for instance).



This logo indicates that the product operates with a continuous voltage. This symbol is followed by the ratings (voltage and current for instance)



Mark indicating a power supply meets the level VI requirements.



Double insulated or class 2 electrical appliances are products that have been designed in a way so as not to require a safety connection to electrical earth (These products must NOT have a safety connection to Earth).

IS 13252 (Part 1)
IEC 60950-1



India's Compulsory Registration Scheme (CRS) for Electronic Products.



The Electrical Appliance and Material Safety Law applies to enterprises that manufacture or import products in Japan



China Compulsory Certification (CCC) is similar to other certifications for product quality standardization—such as the European CE system



The CSA mark on your product demonstrates to your customers, that a sample of the product has been certified to applicable standards including standards written or administered by the American National Standards Institute (ANSI), Underwriters Laboratories (UL), CSA Group (CSA), NSF International (NSF), and other North American and global organizations

8. Accessibility

The product has been designed and manufactured in accordance with the essential accessibility requirements set out in Directive (EU) 2019/882 of the European Parliament and of the Council of 17 April 2019, in particular:

- The user interface is perceivable, operable, understandable, and robust.
- The device supports use by individuals with sensory, motor, or cognitive impairments.

Accessibility has been assessed and tested according to the following harmonized standard: EN 301 549 : «Accessibility requirements for ICT products and services» in accordance with the provisions of the Directive (EU) 2019/882 coordination standards specified in Resolution C (2022) 6456

The assessment remains valid as long as the hardware and software integration – including all relevant applications – continues to comply with the requirements set forth by the applicable accessibility directive.

Any significant modifications to the system architecture, user interface, or compatibility with assistive technologies must be reassessed to ensure ongoing compliance.

Some models may need require an external accessory for audio assistance. Please contact Ingenico support for more information (<https://www.ingenico.com>).

9. RED-DA (Radio Equipment Directive Delegated Act)

The product has been designed and manufactured in accordance with the essential requirements of the **RED DA** (Radio Equipment Directive Delegated Act), as set out in **Commission Delegated Regulation (EU) 2022/30 of 29 October 2021** supplementing **Directive 2014/53/EU** of the European Parliament and of the Council with regard to the application of the essential requirements referred to in **Article 3(3)**, points (d), (e) and (f).

- **Article 3.3 (d)** : Network Protection
- **Article 3.3 (e)** : Data and Privacy Protection
- **Article 3.3 (f)** : Fraud Prevention

RED DA aspects have been assessed and tested in accordance with the harmonized standard **EN 18031: «Common security requirements for radio equipment»**, ensuring alignment with the essential cybersecurity requirements of **Directive 2014/53/EU**. This applies to the relevant categories and classes of radio equipment as specified in **Delegated Regulation (EU) 2022/30**.

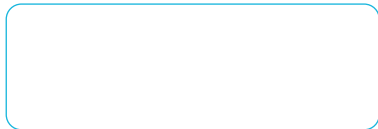
The assessment remains valid as long as the hardware and software integration – including all relevant applications – continues to comply with the requirements set forth by the applicable RED DA. Any additional software should follow RED DA requirements to remain EU compliant.

Please contact Ingenico support for more information (<https://www.ingenico.com>).

"This Document is Copyright © 2026 by INGENICO Group. INGENICO retains full copyright ownership, rights and protection in all material contained in this document. The recipient can receive this document on the condition that he will keep the document confidential and will not use its contents in any form or by any means, except as agreed beforehand, without the prior written permission of INGENICO. Moreover, nobody is authorized to place this document at the disposal of any third party without the prior written permission of INGENICO. If such permission is granted, it will be subject to the condition that the recipient ensures that any other recipient of this document, or information contained therein, is held responsible to INGENICO for the confidentiality of that information.

Care has been taken to ensure that the content of this document is as accurate as possible. INGENICO however declines any responsibility for inaccurate, incomplete or outdated information. The contents of this document may change from time to time without prior notice, and do not create, specify, modify or replace any new or prior contractual obligations agreed upon in writing between INGENICO and the user. INGENICO is not responsible for any use of this device, which would be non-consistent with the present document. All trademarks used in this document remain the property of their rightful owners."

Your contact



www.ingenico.com

13-17 rue Pagès, 92150 Suresnes – France

Banks and Acquirers International Holding SAS / 814 767 216 RCS Nanterre

Lane/8000
900030066 R11 000 04 / 0326