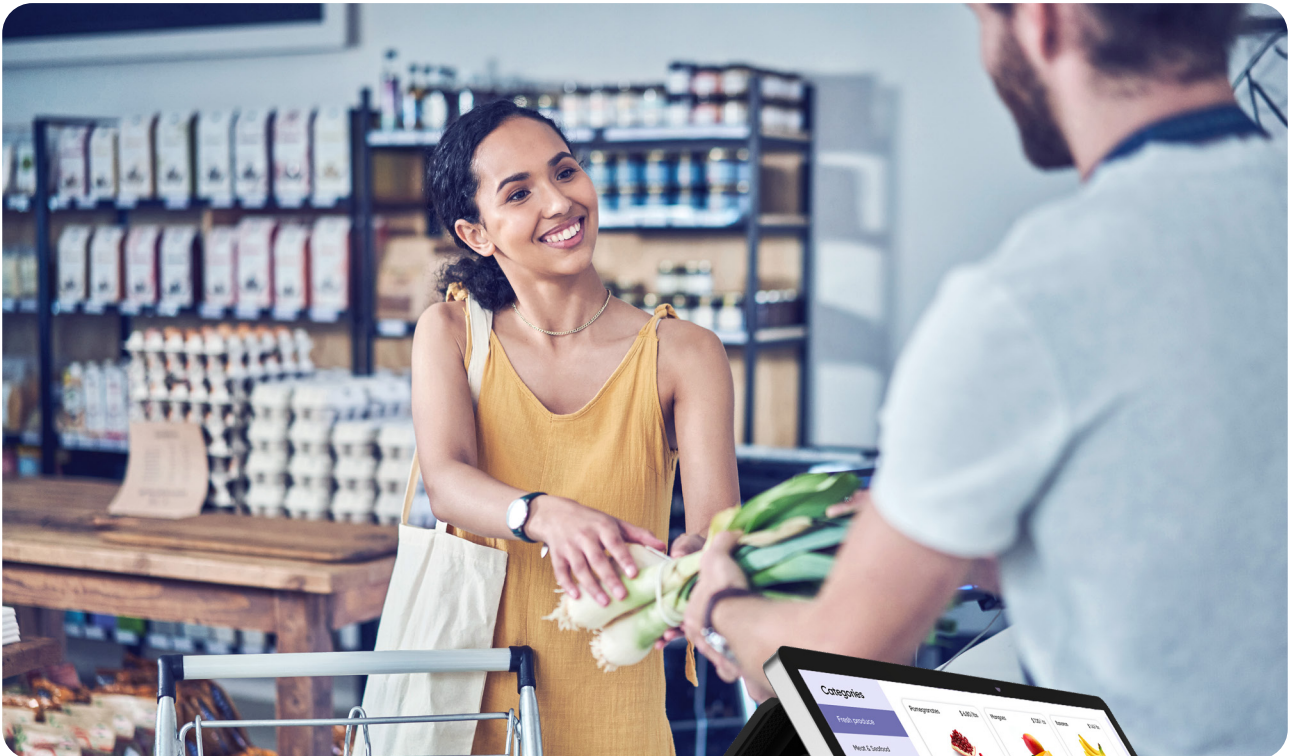


ingenico

AXIUM CX7000

Deliver more at counter with a POS that combines dual displays and secure payments



- Streamline operations with integrated sales, payment, and inventory management that keep everything running effortlessly
- Enable faster, smoother transactions by minimizing checkout times and creating a seamless payment flow
- Save valuable counter space while maintaining efficiency with a compact design made to perform in tight environments – perfect for any setup
- Unlock flexibility with the Android platform to tailor daily workflows while ensuring PCI-certified security at every step



AXIUM CX7000

Deliver more at the counter with a POS that combines dual displays and secure payments



- Streamline operations with integrated sales, payment, and inventory management that keep everything running effortlessly
- Enable faster, smoother transactions by minimizing checkout times and creating a seamless payment flow
- Save valuable counter space while maintaining efficiency with a compact design made to perform in tight environments – perfect for any setup
- Unlock flexibility with the Android platform to tailor daily workflows while ensuring PCI-certified security at every step



The AXIUM CX7000 combines cash register simplicity with advanced payment technology into a sleek all-in-one device.

Effortless Integration

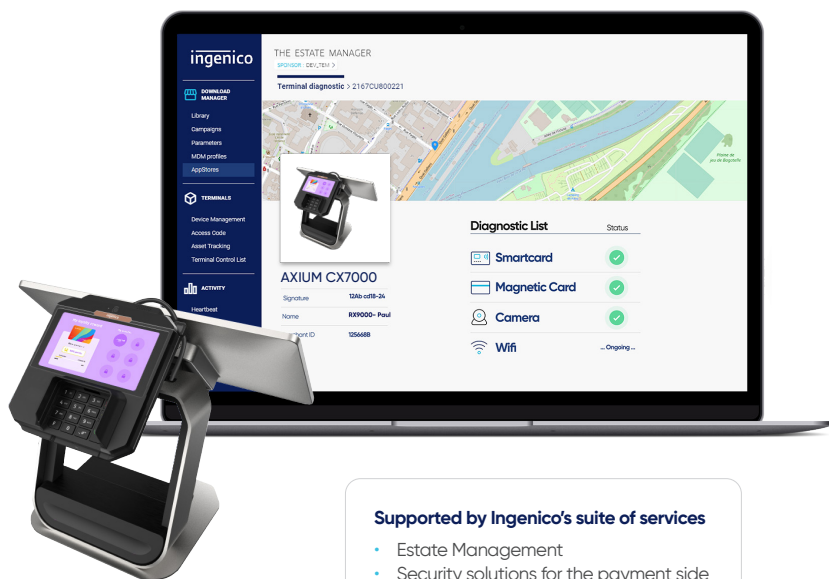
- **Effortless setup & operation:** Plug-and-play with minimal setup.
- **Seamless integration:** Payments, cash, and sales systems work together smoothly.
- **Customizable all-in-one solution:** Optional peripherals like barcode scanners and printers to fit business needs.
- **Easy customer tool integration:** Loyalty programs, digital receipts, and CRM tools.

Smart Business Hub

- **Space-saving design:** Compact form factor perfect for any counter.
- **User-friendly interface:** 15,6" high-resolution multi-touchscreen for intuitive use and an enhanced user experience.
- **Open Android:** Android 14, GMS certified for seamless integration of value-added services.

Next-Level Payments

- **Fast checkout :** Major payment types supported, including contactless and digital wallets; dedicated payment zones; powerful processing capabilities.
- **Smooth checkout:** Intuitive user interface, 5.5" touchscreen, large keypad, and integrated camera for swift QR code scanning.
- **Advanced security:** PCI PTS v6 certification; EMV certified, skimming detection.



Supported by Ingenico's suite of services

- Estate Management
- Security solutions for the payment side
- Support services
- Professional services

Specifications

Smart Stand Kit

Merchant Display	<ul style="list-style-type: none"> Android 14 Color / capacitive multi-touch Internal memory Connectivity Merchant Swipe 	<ul style="list-style-type: none"> GMS certified 15,6"HD, 1920 x 1080 px 64GB Flash, 4GB RAM WiFi IEEE8.2.11 a/b/g/n/ac 2.4GHz and 5GHz Bluetooth 5.0 Add-on accessory 	<ul style="list-style-type: none"> ✓ ✓ ✓ ✓ ✓ Option
Peripheral Hub	<ul style="list-style-type: none"> Connections 	<ul style="list-style-type: none"> RJ45 x1 (LAN) USB-A x4 RJ11 x1 	<ul style="list-style-type: none"> ✓ ✓ ✓
Standpole			<ul style="list-style-type: none"> ✓

Accessories

Accessories	<ul style="list-style-type: none"> PSU Power plug External peripherals 	<ul style="list-style-type: none"> PSU 100/240V - 24V/2,5A Barcode, cashdrawer, printer 	<ul style="list-style-type: none"> ✓ ✓ Option
-------------	---	---	--

Payment Terminal

Processor	<ul style="list-style-type: none"> Application processor Crypto processor 	<ul style="list-style-type: none"> Cortex Quad-core A55, 1.8GHz Security core SC300, 192MHz 	<ul style="list-style-type: none"> ✓ ✓
Memory	<ul style="list-style-type: none"> Internal External 	<ul style="list-style-type: none"> 8GB Flash, 1GB RAM 16GB Flash, 2GB RAM 32GB Flash, 4GB RAM MicroSD Card slot 	<ul style="list-style-type: none"> ✓ Option Option ✓
OS	<ul style="list-style-type: none"> Android 	<ul style="list-style-type: none"> Android 11 Security OS 	<ul style="list-style-type: none"> ✓
Card readers	<ul style="list-style-type: none"> Smartcard, Magstripe, Contactless 		<ul style="list-style-type: none"> ✓
Display	<ul style="list-style-type: none"> Color / capacitive multi-touch 	<ul style="list-style-type: none"> 5.5"HD IPS, 1280 x 720 px, 16:9 	<ul style="list-style-type: none"> ✓
Keypad	<ul style="list-style-type: none"> Virtual screen keys Physical keys 	<ul style="list-style-type: none"> Menu, Home, Back 15 keys, raised markings, backlit Audio volume: vol +/- 	<ul style="list-style-type: none"> ✓ ✓ ✓
Data capture	<ul style="list-style-type: none"> Front camera Rear camera and the Honeywell library embedded 	<ul style="list-style-type: none"> 5MP, autofocus for photo/video 0.3 pixels, fixed focus camera, for code scanning 	<ul style="list-style-type: none"> ✓ Option
Audio	<ul style="list-style-type: none"> Speaker, Audio Jack & Buzzer 		<ul style="list-style-type: none"> ✓
Connectivity	<ul style="list-style-type: none"> Wired Wireless 	<ul style="list-style-type: none"> Ethernet 10/100 base T WiFi IEEE8.2.11 a/b/g/n/ac 2.4GHz and 5GHz Bluetooth 5.0, support BLE 	<ul style="list-style-type: none"> ✓ ✓ ✓
Security		<ul style="list-style-type: none"> PCI PTS V6 certified EMV Level 1 	<ul style="list-style-type: none"> ✓ ✓

